

#81 Concrete Insert #81N Concrete Insert Nut

Finishes Bare Metal, Zinc Plated, Painted

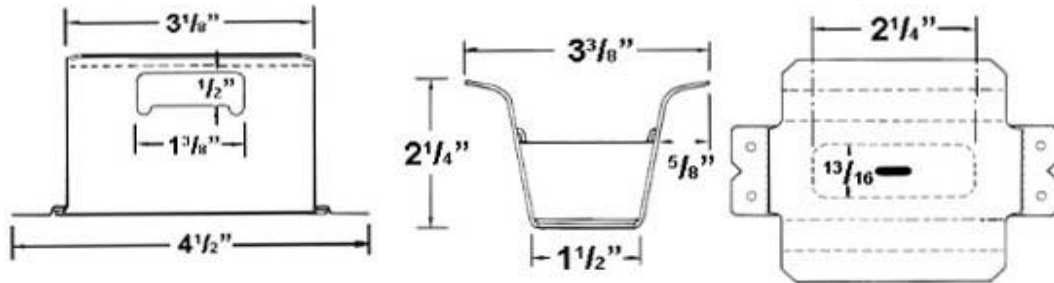
Materials Carbon Steel

Approvals Complies with MSS SP-58 and MSS SP-69 (Type 18).

Recommended Heavy gauge insert box is nailed to concrete form. When concrete has set, knock out plug can be removed and insert nut installed. Side openings accommodate up to 1/2" reinforcing rods.

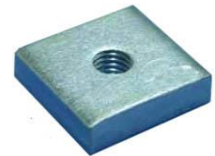


81 Concrete Insert



SIZE A	WEIGHT EACH (Lbs.)		MAX. REC. LOAD (Lbs.)
	Insert (Fig# 81)	Nut (Fig# 81N)	
3/8 - 16	0.61	0.12	610
1/2 - 13	0.61	0.12	800
5/8 - 11	0.61	0.10	800
3/4 - 10	0.61	0.10	800

QWI 4.3.1 Issue Date Nov/21 Rev.3



81N Insert Nut

