

#802 Heavy Welded Bracket

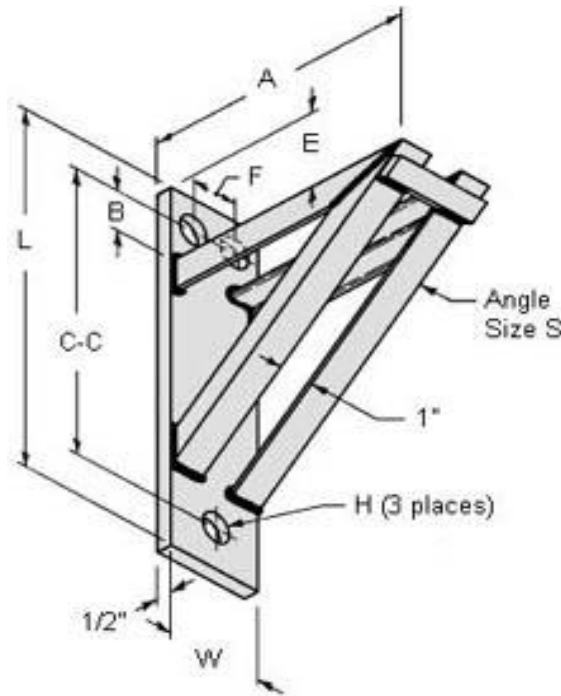
Finish Zinc Plated (Z), Hot Dipped Galvanized (HDG). Bare Metal.

Material Mild Steel, Stainless Steel 304SS & 316SS

Approval Complies with MSS SP-58 and MSS SP-69 (Type 33).

Recommended Recommended for the support of pipe loads up to 3000 lbs
Constructed of facing angle iron with 1" space. The bracket provides maximum lateral adjustment when carrying or suspending pipe.

Specify size number, name, and finish



SIZE NO.	SPECIFICATION DATA								WGT EACH (LBS.)
	C-C	A	E	H	B	L	W	ANGLE SIZE S	
1	15 1/2	12	2 3/4	13/16	1 1/2	18	4	2 x 1 1/2 x 1/4	25
2	21 1/2	18	2 3/4	13/16	1 3/8	24	5	2 x 2 x 1/4	38
3	27 1/2	24	2 3/4	1 1/16	1 1/4	30	5	2 1/2 x 2 x 5/16	69
4	33 1/4	30	3	1 1/16	1 1/2	36	5	2 1/2 x 2 x 5/16	82
5	39	36	3	1 1/16	1 1/2	42	6	3 1/2 x 2 1/2 x 3/8	130
6	46	42	3 1/2	1 1/16	2	50	6	3 1/2 x 2 1/2 x 3/8	155

QWI 4.3.1 Issue Date Dec/21 Rev.3