

# #78 Protection Saddle 5" Insulation

**Finishes** Bare Metal, Zinc Plated, Hot Dipped Galvanized

**Materials** Carbon Steel, Stainless Steel 316SS & 304SS

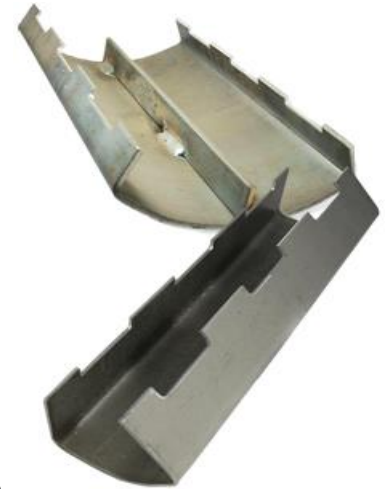
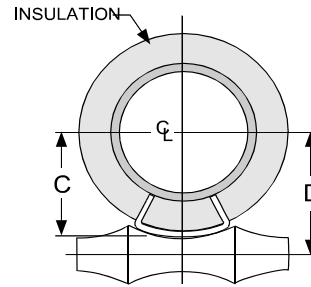
**Approvals** Complies with MSS SP-58 (Type 39)

**Recommended** Designed to protect pipe insulation from crushing, typically used on high temperature pipe lines.

*Maximum temperatures: Carbon Steel 650°F, Alloy 950°F*

**Notes** All saddles 12" in length.  
Center rib starts at 12" IP

*\*Other sizes may be available upon request*



IRON PIPE SIZE	SPECIFICATION DATA				ACTUAL THICKNESS OF COVERING	RECOM. MAX. LOAD (LBS.)	APP'X WT. PER 100 (LBS.)
	C	D	HANGER ROLLER SIZE				
			# 94/95	# 93			
2	6 5/16	7 5/16	12	12	4 1/2	1800	658
2 1/2	6 5/8	7 15/16	12	14	4 1/2	1800	658
3	6 15/16	8 5/16	12	14	4 1/2	1800	658
4	7 3/8	8 13/16	14	16	4 1/2	1800	665
5	8	9 3/8	16	16	4 1/2	1800	665
6	8 1/2	9 3/4	16	18	4 1/2	1800	1160
8	9 5/8	11	18	20	4 1/2	1800	1160
10	10 9/16	12 7/16	20	24	4 1/2	1800	1200
12	11 9/16	13 7/16	24	24	4 1/2	5000	1650
14	12 1/4	14 1/8	24	24	4 1/2	7200	1660
16	13 3/16	15 5/16	30	--	4 1/2	7200	1780
18	14 3/16	16 5/16	30	--	4 1/2	7200	1840
20	15 3/16	17 3/8	30	--	4 1/2	7200	1910

QWI 4.3.1 Issue Date May/23 Rev.0

Note: when referencing a printed copy of this specification page, please insure it is the latest version as found on our website at [www.taylorwalraven.ca](http://www.taylorwalraven.ca)

For more information, please contact Customer Service at 1-800-263-8652