

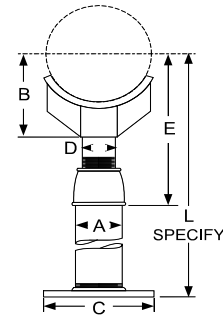
#526 Adjustable Pipe Saddle Support

Finish Hot Dipped Galvanized (HDG), Bare Metal)

Material Carbon Steel Saddle and Nipple with Cast Iron Reducing Coupling
Sainless Steel 304SS & 316SS

Approval Complies with MSS SP-58 and SP-69 (Type 38).

Recommended 2 1/2" through 36"
Pipe support for horizontal pipe lines where vertical adjustment is required.
Specify pipe size, figure number, name, finish.
Base stand ordered separately. Requires accurate center line of pipe to floor dimension "L".



IRON PIPE SIZE	SPECIFICATION DATA				Dimension E		APP'X LBS PER 100	
	A	B	C	D	MIN.	MAX.	COMPLETE	SADDLE ONLY
2 1/2	2 1/2	3 7/16	8	1 1/2	8	13	900	480
3	2 1/2	3 11/16	8	1 1/2	8 1/4	13 1/4	920	500
3 1/2	2 1/2	3 15/16	8	1 1/2	8 1/2	13 1/2	940	520
4	3	4 3/16	10	2 1/2	9 1/4	14	1500	760
5	3	4 13/16	10	2 1/2	10	14 3/4	1665	925
6	3	5 7/16	10	2 1/2	10 1/2	15 1/4	1765	1025
8	3	6 15/16	10	2 1/2	11 3/4	16 1/2	2020	1280
10	3	8 7/16	10	2 1/2	13 1/2	18 1/4	2515	1775
12	3	9 15/16	10	2 1/2	15	19 3/4	2900	2160
14	4	10 15/16	10	3	16 1/4	20 3/4	4920	3800
16	4	12 3/8	10	3	17 3/4	22 1/4	5320	4200
18	6	13 7/8	12	4	19 1/2	24	7080	5100
20	6	15 3/8	12	4	21	25 1/2	10480	8500
24	6	17 15/16	12	4	23 3/4	28 1/4	13000	11000
30	6	21 5/16	12	4	27	31 1/2	17000	15000
32	6	22 1/2	12	4	28 1/4	32 3/4	18100	16100
36	6	24 1/2	12	4	30 1/4	34 3/4	24900	22900

Note: 8" and larger supplied with gussets at pipe support

QWI 4.3.1 Issue Date Sept/22 Rev.9

Note: when referencing a printed copy of this specification page please insure it is the latest version as found on our website at www.taylorwalraven.ca