

#410 Malleable Beam Clamp

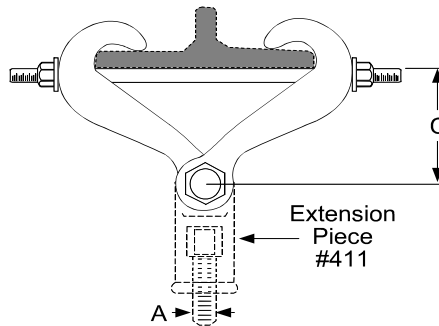
Finish Bare Metal, Zinc Plated

Materials Malleable Iron Jaw, Carbon Steel Hardware

Approvals Complies with MSS SP-58 and MSS SP-69 (Type 30) when used with Extension Piece Fig# 411

Recommended Designed for attaching a hanger rod to the bottom flange of a beam. Flange thickness not to exceed 0.60"

*Order extension piece seperately fig #411
Specify figure number, name and finish.*



| A (7/8 MAX ROD) | SPECIFICATION DATA | | | | | | BOLT DIA. | RECOM. MAX. LOAD (LBS.) | APP'X WT PER 100 (LBS.) |
|-----------------------|---|--------|--------|---------|--------|-------|-----------|----------------------------|----------------------------|
| | ROD TAKE-OUT "C" FOR WIDTH OF BEAM FLANGE | | | | | | | | |
| | 2 3/8" | 3" | 4" | 5" | 6" | 7" | | | |
| 3/8 - 7/8 | 3 1/2 | 3 7/16 | 3 5/16 | 2 15/16 | 2 9/16 | 1 7/8 | 7/16 | 1365 | 249 |

QWI 4.3.1 Issue Date Dec/21 Rev.8

Note: when referencing a printed copy of this specification page, please insure it is the latest version as found on our website at www.taylorwalraven.ca

For more information, please contact Customer Service at 1-800-263-8652