

#406 Small Mouth Top Beam Clamp

Finish Bare Metal, Zinc Plated

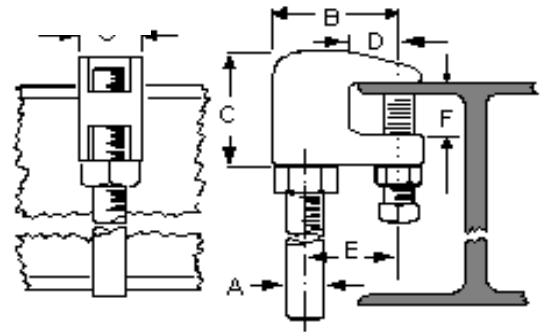
Material Ductile Iron* c/w hardened steel cup point set screw
Stainless Steel 304SS & 316SS

Approvals **U.L. - U.L.C. listed 3/8 and 1/2 (1/2 for 4" IPS max).**
FM approved for 3/8" only.
Complies with Manufacturers' Standardization Society
MSS SP-58 and SP-69 (Type 19)



Recommended Recommended for use under roof installations with bar joist type construction where flange thickness does not exceed 5/8 inch.

Stainless Steel Only Available up to 3/4"



Maximum recommended set screw torque values per

MSS SP-69.

Set Screw Size 3/8"-16

Foot-Lbs 5

Nm 7

** Approvals on stainless steel - cUL for 3/8" and 1/2" only (4" I.P. Max.)

ROD SIZE A	SPECIFICATION DATA						MAX. PIPE SIZE	RECOM. MAX. LOAD (LBS)	APPR'X WT. PER 100 (LBS)	PC'S PER PKG.
	B	C	D	E	F	G				
3/8	1 5/16	1 1/2	1/2	1	3/4	7/8	4	610 *	32	100
1/2	1 5/16	1 1/2	1/2	1	3/4	7/8	4	1130 **	32	100
5/8	1 3/4	1 3/4	5/8	1 3/8	3/4	1 1/8	5	1130	58	50
3/4	1 7/8	1 7/8	5/8	1 3/8	3/4	1 3/8	6	1130	82	50
7/8	2 3/8	1 7/8	5/8	1 3/8	3/4	1 3/8	8	1130	80	50

QWI 4.3.1 Issue Date May/23 Rev.21

* 610 if inverted

**750 if inverted

Note: when referencing a printed copy of this specification page, please insure it is the latest version as found on our website at www.taylorwalraven.ca

For more information, please contact Customer Service at 1-800-263-8652