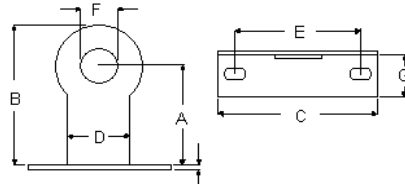


**Finishes** Black Epoxy Coated

**Materials** Carbon Steel, Stainless Steel 304SS

**Recommended** Vertical or horizontal offset pipe guide



TAYLOR #	PIPE SIZE	SPECIFICATION DATA							FASTENER OPTIONS		APPR'X WT PER 100 (LBS)	PC'S PER PKG.
		A	B	C	D	E	F	G	WOOD SCREW	LAG SCREW		
32-01	1/2C X 3/8IP	1 1/8	1 13/16	2 1/2	1	1 3/4	11/16	3/4	# 10	# 10	8	100
32-02	3/4C X 1/2IP	1 3/16	1 7/8	2 1/2	1	1 3/4	29/32	3/4	# 10	# 10	8	100
32-03	1C X 3/4IP	1 1/2	2 7/16	3 1/4	1 1/4	2	1 5/32	3/4	# 14	1/4"	11	100
32-04	1 1/4C X 1IP	1 1/2	2 9/16	3 1/4	1 1/4	2	1 13/32	3/4	# 14	1/4"	16	100
32-05	1 1/2C X 1 1/4IP	2 1/2	3 5/8	4	1 3/4	3	1 23/32	15/16	# 16	1/4"	20	100
32-06	1 1/2IP	2 5/8	4 3/16	4 1/2	2 3/16	3 1/4	1 31/32	1 1/16	# 16	1/4"	24	50
32-07	2IP	2 11/16	4 3/16	4 1/2	2 3/16	3 1/4	2 7/16	1 1/16	# 16	1/4"	30	50
32-08	2C	2 11/16	4 3/16	4 1/2	2 3/16	3 1/4	2 3/16	1 1/16	# 16	1/4"	30	50

32-08 not available in Stainless Steel 304SS

QWI 4.3.1 Issue Date Mar/22 Rev.11

Note: when referencing a printed copy of this specification page, please insure it is the latest version as found on our website at [www.taylorwalraven.ca](http://www.taylorwalraven.ca)

For more information, please contact Customer Service at 1-800-263-8652