

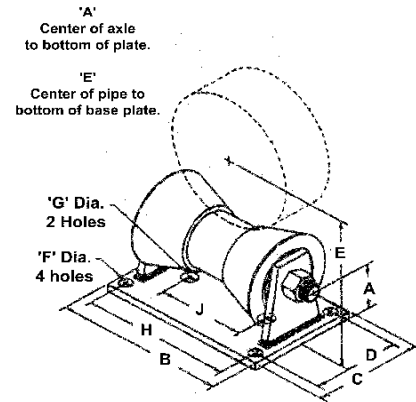
Finish Bare Metal, Hot Dipped Galvanized

Material Cast Iron Roller, Carbon Steel Chair and Axle, also available in Stainless Steel 304SS & 316SS

Approvals Complies with MSS SP-58 and SP-69 (Type 44).

Recommended For support of pipe where longitudinal movement may occur due to expansion and contraction and where vertical adjustment is not necessary.

Maximum temperatures: 400°F at roller, 300°F at resilient coated roller



PIPE SIZE	SPECIFICATION DATA									WEIGHT PER 100 (LBS)	MAX. REC. LOAD
	A	B	C	D	E	F	G	H	J		
2	1 3/4	8 3/8	6	4	3 11/16	9/16	1	6 3/8	3 3/8	508	390
2 1/2	1 3/4	8 3/8	6	4	3 15/16	9/16	1	6 3/8	3 3/8	508	390
3	1 3/4	8 3/8	6	4	4 1/4	9/16	1	6 3/8	3 3/8	508	390
3 1/2	1 3/4	8 3/8	6	4	4 1/2	9/16	1	6 3/8	3 3/8	508	390
4	2	9 7/8	6	4 1/4	5	9/16	1	7 7/8	4 3/4	631	950
5	2	9 7/8	6	4 1/4	5 9/16	9/16	1	7 7/8	4 3/4	631	950
6	2	9 7/8	6	4 1/4	6 1/16	9/16	1	7 7/8	4 3/4	631	950
8	3 3/8	8 5/8	8	5	8 13/16	11/16	1	7	4	1365	2100
10	3 3/8	8 5/8	8	5	9 7/8	11/16	1	7	4	1365	2100
12	3 7/8	11	8	6	11 7/16	13/16	1	9	5 3/4	2100	3075
14	3 7/8	11	8	6	12 1/6	13/16	1	9	5 3/4	2100	3075
16	4 1/4	12 3/8	10	6 1/2	13 5/8	13/16	1	10 3/8	6 3/4	3423	4980
18	4 1/4	12 3/8	10	6 1/2	14 11/16	13/16	1	10 3/8	6 3/4	3423	4980
20	4 1/4	12 3/8	10	6 1/2	15 11/16	13/16	1	10 3/8	6 3/4	3423	4980
22	4 3/8	13 1/2	10	6 1/2	16 11/16	13/16	1	11 1/2	7 1/2	4000	6100
24	4 3/8	13 1/2	10	6 1/2	17 11/16	13/16	1	11 1/2	7 1/2	4000	6100
26	5 1/8	17	10	7 3/4	19 3/4	1 1/16	1	14 1/4	10	7132	6100
30	5 1/8	17	10	7 3/4	21 3/4	1 1/16	1	14 1/4	10	7132	7500
36	5 3/4	20	12	9	25 3/4	1 3/8	1	17	12	14700	12000
42	5 3/4	20	12	9	28 7/8	1 3/8	1	17	12	14700	12000

QWI 4.3.1 Issue Date Dec/23 Rev.7

Note: when referencing a printed copy of this specification page, please insure it is the latest version as found on our website at www.taylorwalraven.ca

For more information, please contact Customer Service at 1-800-263-8652