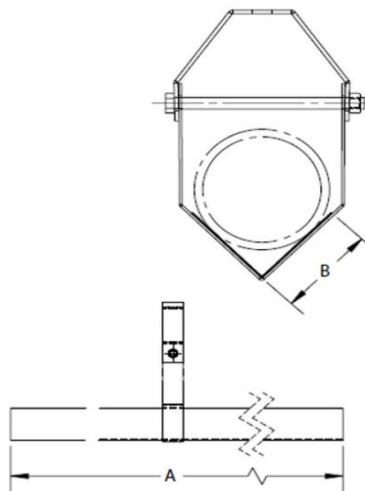
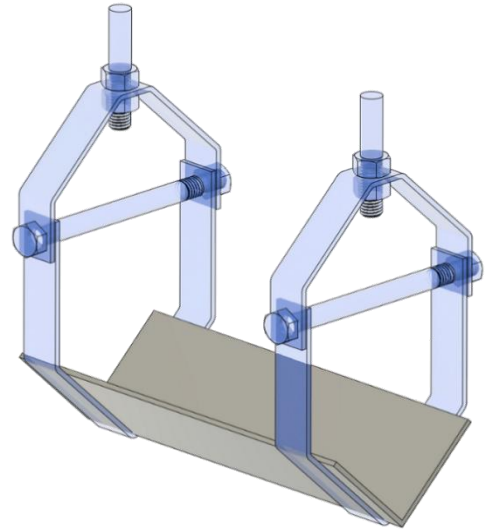


**Finishes** Pre-Galvanized

**Materials** Carbon Steel

**Recommended** Designed for the support of plastic or other flexible pipe systems. Use with FIG. 11V clevis hanger "V" bottom .

Hangers should be placed as close to channel joints as possible.



SIZE NO.	SPECIFICATION DATA			WEIGHT EACH (LBS)	MAX REC LOAD (LBS)
	FOR PIPE SIZE	CHANNEL LENGTH A	B		
1	1/2 TO 2	10'	1 1/2	5.40	150
2	2 1/2 TO 4	10'	3	10.80	250

QWI 4.3.1 Issue Date Nov/21 Rev.3

Note: when referencing a printed copy of this specification page, please insure it is the latest version as found on our website at [www.taylorwalraven.ca](http://www.taylorwalraven.ca)

For more information, please contact Customer Service at 1-800-263-8652